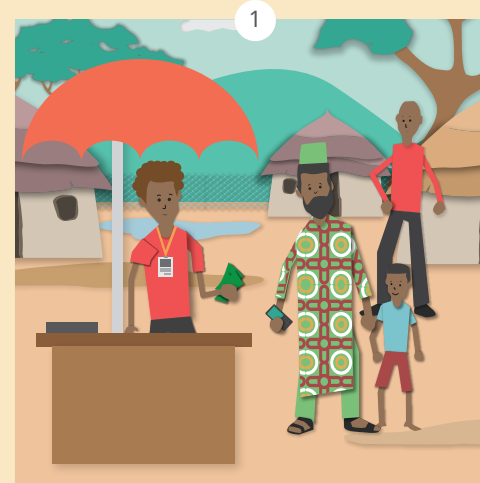


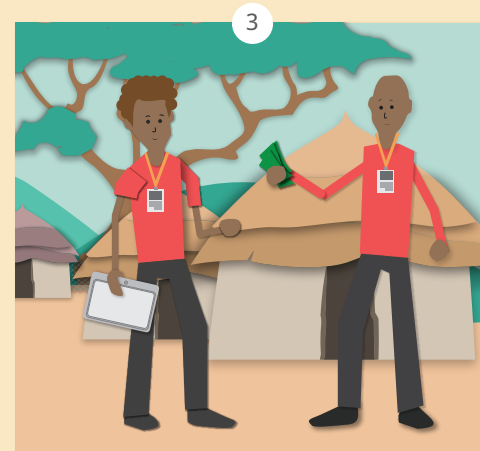
Ndenge nini nakomaki mosungi mosalisi ya batu - mpe lolenge mibeko mizali



Nabandaki kosala mosala na ngai.



Mokonzi na ngai azwaki mbongo kouta na NU mpo ya kosalisa bato banyokwami.



Sikoyo mwa mbongo oyo eutaka na NU basalelaka mpo ya kofutaka ngai.



Nazosala kaka musala moko wana, kasi sikawa nakomi mosungi mosali na mpe lisanga bazomona ngai lokola moko ya mosungi mosali .

Sikoyo nakobanda kotosa mibeko oyo etiyelami mpo na basungi basalisi nyoso.
Mibeko miye nasengeli kolanda sikoyo mpo nakomi mosungi mosali.

1

Tosengeli kosenga kosangisa nzoto na mutu te to lisungi ya nzoto mpo na kosombitinia na kosalela bango eloko moko.



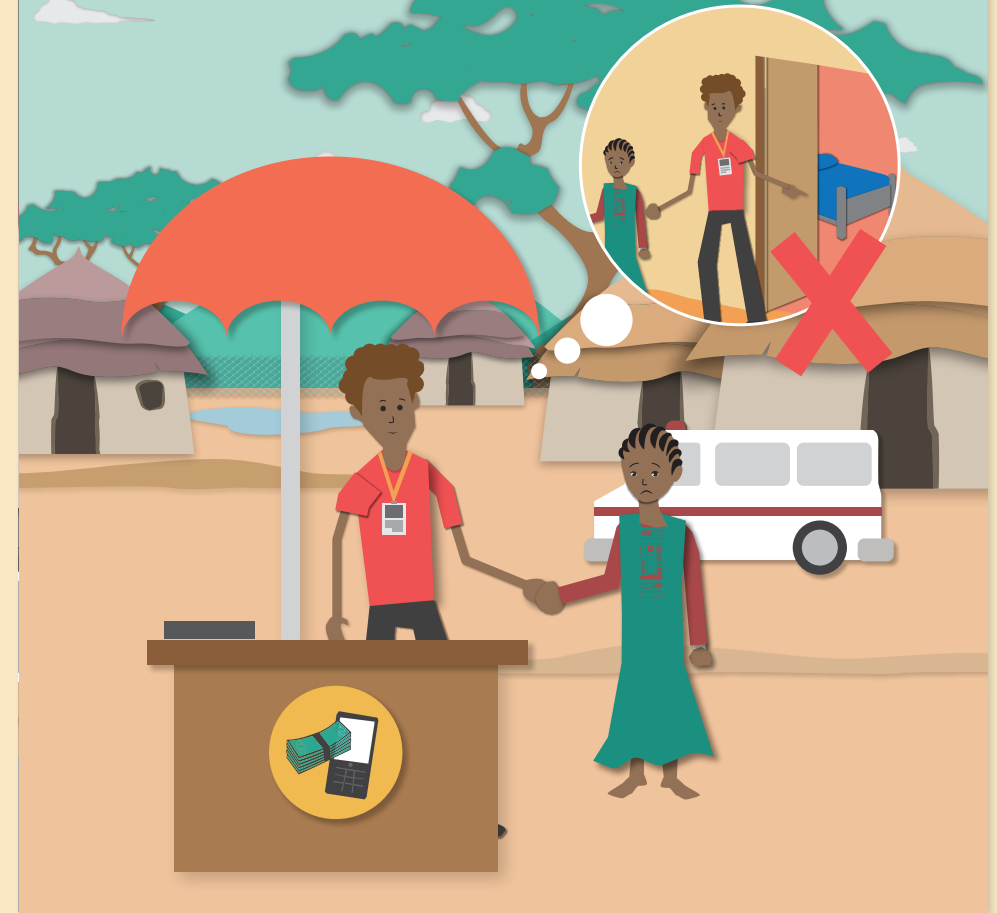
2

Tosengeli kosala mbala moko te misala na biso mpo na kindumba , to kofuta mpo nakosangisa nzoto na mutu ata nani - ata soki bapesi yo



3

Tosengeli mbala moko te kosangisa nzoto na bana. Mutu nyonso oyo nanu akokisi mbula 18 te aza mwana.



Soki namoni yango, nayoki yango to bakanisi ete esalemaki **nakoloba yango**. Nakozwa matata te na lisanga na ngai

Loba yango awa



World Food Programme



UN MIGRATION



TRANSLATORS WITHOUT BORDERS

SEXUAL EXPLOITATION & ABUSE

TOGETHER WE SAY

NO