

Ndenge nini nakomaki mosungi mosalisi ya batu - mpe lolenge mibeko mizali

1



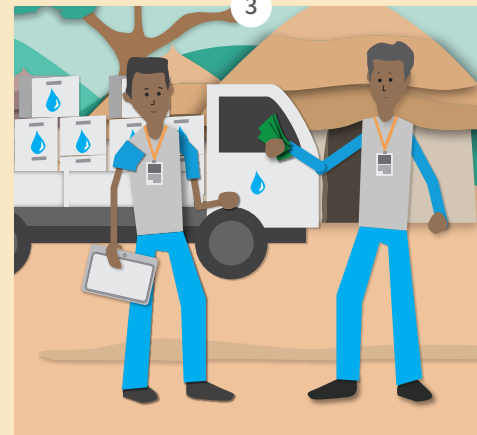
Nabandaki kosala mosala na ngai.

2



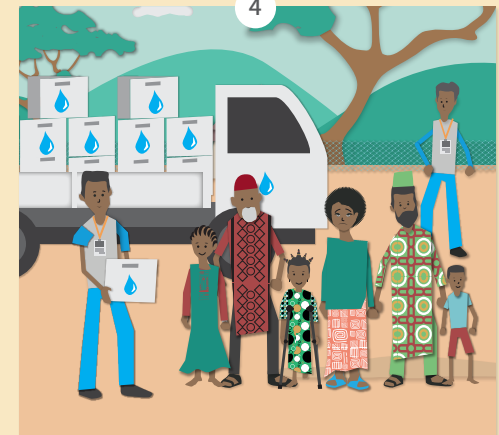
Mokonzi na ngai azwaki mbongo kouta na NU mpo ya kosalisa bato banyokwami.

3



Sikoyo mwa mbongo oyo eutaka na NU basalelaka mpo ya kofutaka ngai.

4

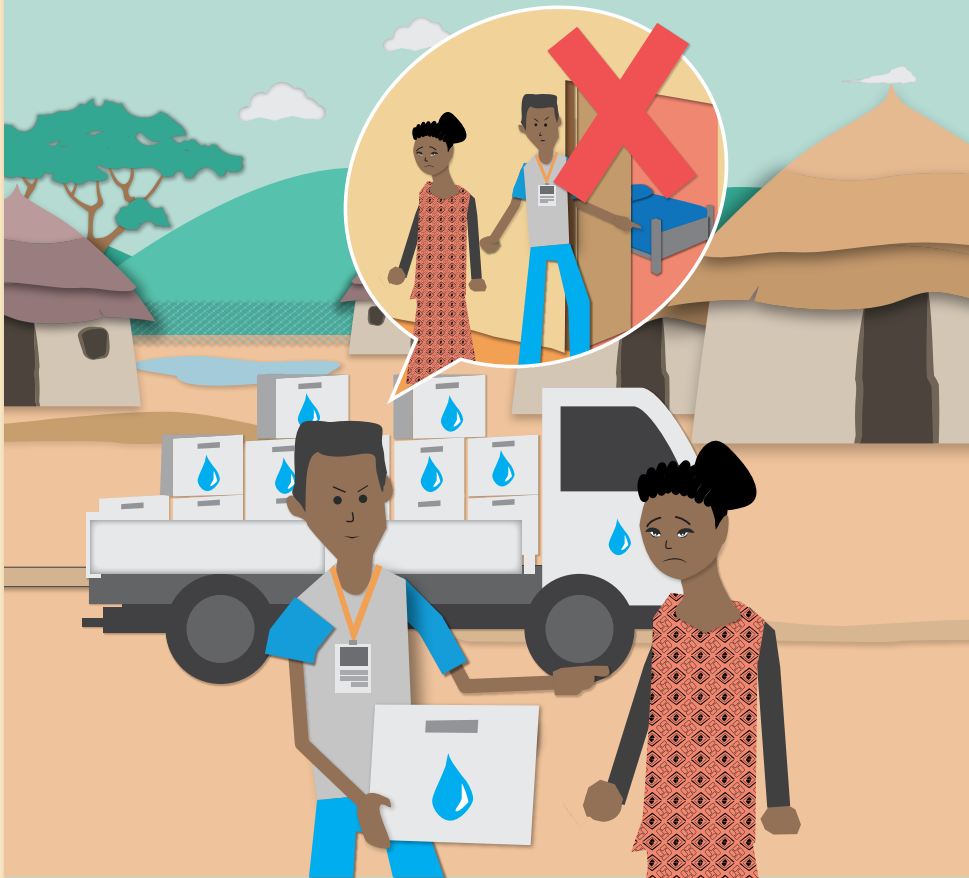


Nazosala kaka musala moko wana, kasi sikawa nakomi mosungi mosalisi na mpe lisanga bazomona ngai lokola moko ya mosungi mosalisi .

**Sikoyo nakobanda kotosa mibeko oyo etiyelami mpo na basungi basalisi nyoso.
Mibeko miye nasengeli kolanda sikoyo mpo nakomi mosungi mosali.**

1

Tosengeli kosenga kosangisa nzoto na mutu te to lisungi ya nzoto mpo na kosombitinia na kosalela bango eloko moko.

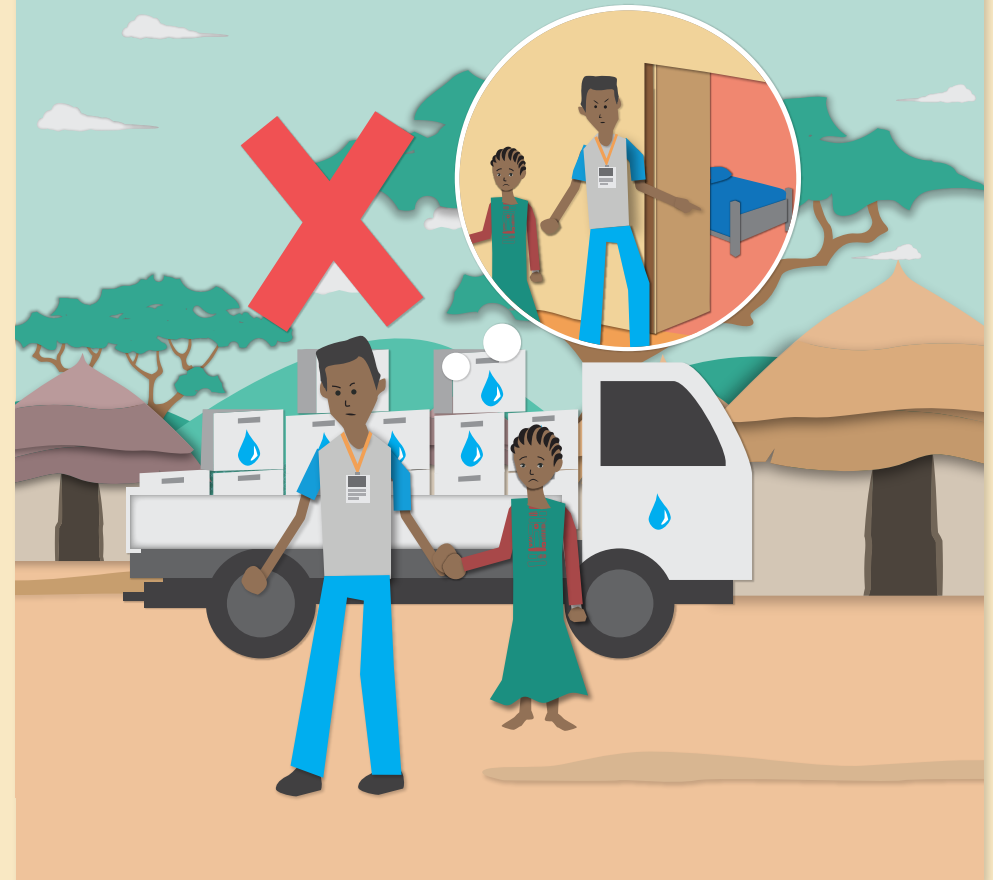


2

Tosengeli kosala mbala moko te misala na biso mpo na kindumba , to kofuta mpo nakosangisa nzoto na mutu ata nani - ata soki bapesi yo



**Tosengeli mbala moko te kosangisa
nzoto na bana. Mutu nyonso oyo nanu
akokisi mbula 18 te aza mwana.**



Soki namoni yango, nayoki yango to bakanisi ete esalemaki **nakoloba**
yango. Nakozwa matata te na lisanga na ngai

Loba yango awa



World Food
Programme



TRANSLATORS
WITHOUT BORDERS

