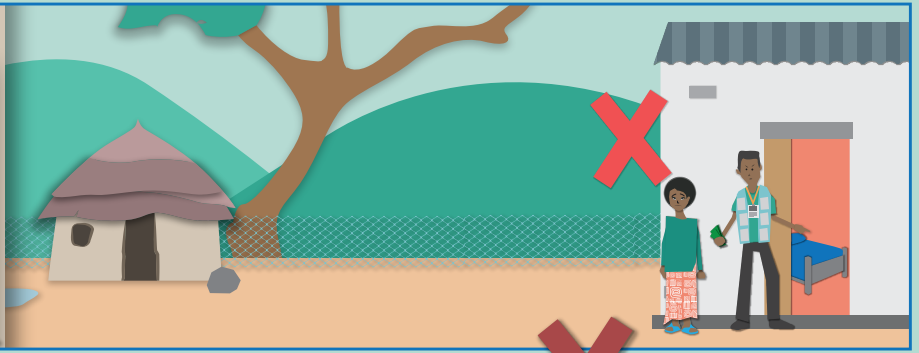


Munna cènimusoya binkaniw ni jônya walew ka kan ka lakofô?

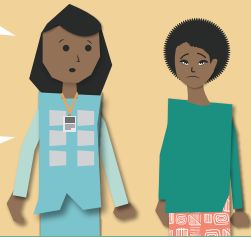
N ye nin ye don dô la.



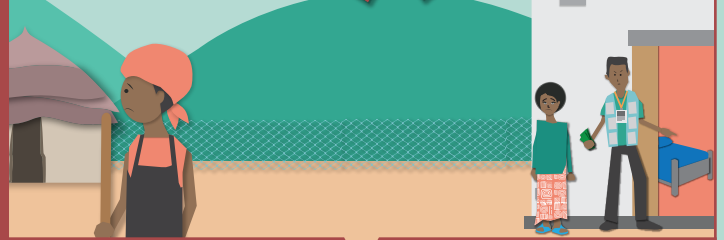
N ye a lakofô.



U ka patôrôn ye dèmè don bin kèra môgô min kan ma.



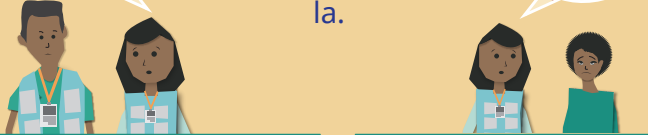
Ni n tun ma a lakofô dun.



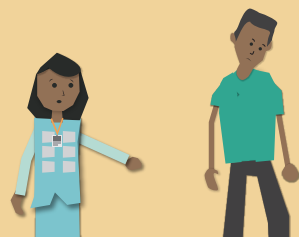
A tu tè na dèmè sôrô cogosi la.



Cakèda ye sègèsègèliw kè yaasa ka famuyali sôrô a ko la.



Sègèsègèliw ye a yira ka fô ko n ye môgô min lakofô ko a binna muso in kan.



A bè seka kè a tun juguya la.



A tola ka baara kè dèmèjèkuluw fè fô a nana jalaba sôrô.



Sisan, an bèè lakanalen don.



Halisa n bèè to k'a ye dafèlaw la.



Ni n ye o wale ninnu dô ye, walima ka ko mè, ani hali ka siga a dô la, n ka kan ka o ko fô. N tè a fè gèlèya ka don n ni n'ka cakèda cè.

A gnèfô yan



World Food Programme



UN MIGRATION



TRANSLATORS WITHOUT BORDERS

